

# UNIVERSAL PRODUCT LINE

SERIES: 1124A, 1124AE, 1324A

CAST IRON CONSTRUCTION

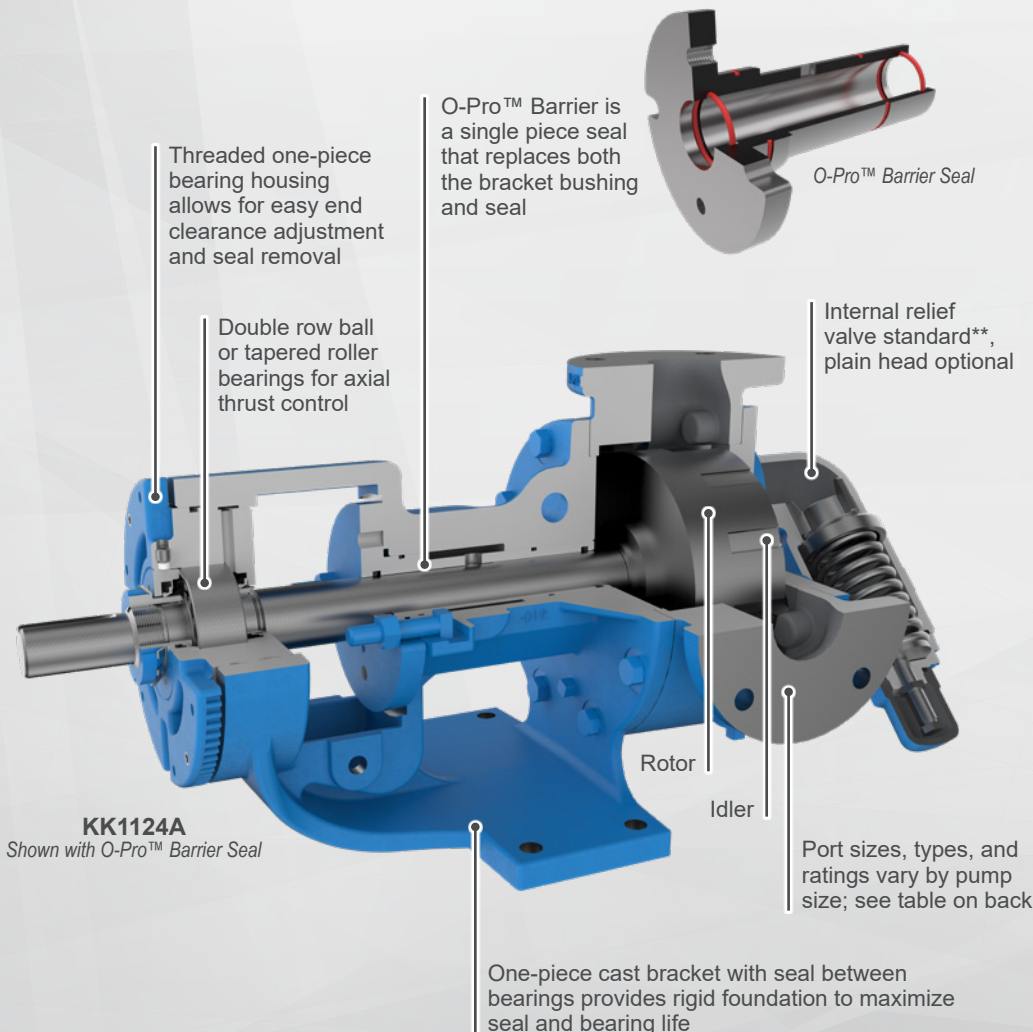
## ABOUT O-PRO™

Viking Pump® is the leader in internal gear innovation and the latest development is the O-Pro™ seal technology. This new series benefits from the enhancement of our own factory engineered and installed seal. This technology features a robust seal and lubrication chamber, all in one.



## FEATURES & BENEFITS

- Rugged design provides superior performance in many markets
- Tight clearances offer high efficiency and excellent priming capabilities
- O-Pro™ Barrier combines reliable sealing with easy maintenance
- O-Pro™ Barrier is standard with FKM elastomers



**CAPACITY**  
to 1,300 GPM  
(295 m³/h)



**PRESSURE**  
to 200 PSI  
(14 BAR)

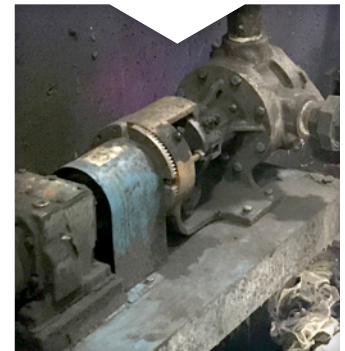


**TEMPERATURE\***  
0°F to +225°F  
(-15°C to +105°C)



**VISCOSITY\***  
100 to 2,500 SSU  
(20 to 550 cSt)

\* Range may increase with end clearance adjustment



**VIKING PUMP®**

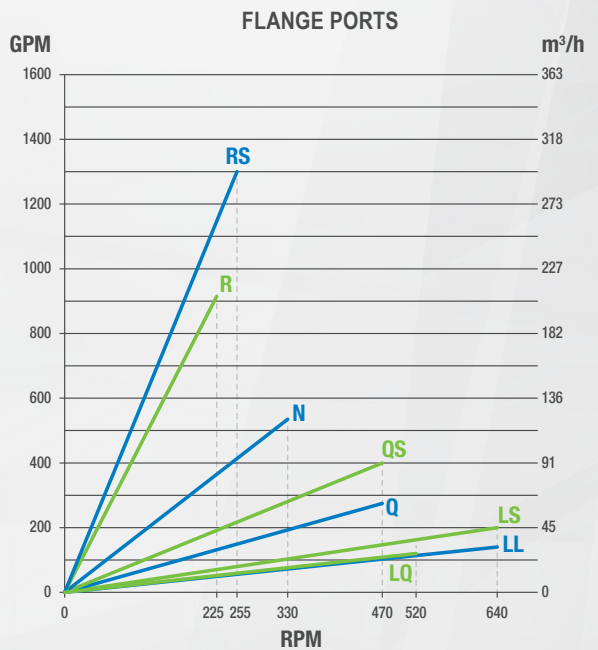
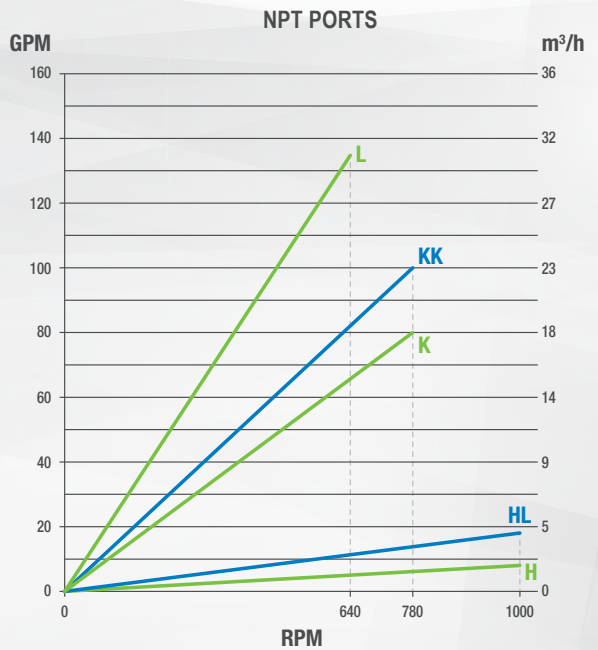
\*\* RS size is standard with jacketed head, no valve.

# PERFORMANCE

MODELS	SPECIFICATIONS					
	Performance			Standard Ports		
Non-Jacketed*	Performance			Standard Ports		
O-Pro™ Barrier Seal	Max Speed,			Size,		
	RPM	GPM	m³/h	Inches	Type	Orientation
H1124A	1000	8	1.8	1.5	NPT	Right Angle
HL1124A	1000	18	4	1.5	NPT	Right Angle
K1124A	780	80	18	2	NPT	Right Angle
KK1124A	780	100	23	2	NPT	Right Angle
L1124AE	640	135	31	2	NPT	Right Angle
LQ1124AE	520	120	27	2.5	Flange	Right Angle
LL1124AE	640	140	32	3	Flange	Right Angle
LS1124A	640	200	45	3	Flange	Right Angle
Q1124A	470	275	62	4	Flange	Right Angle
QS1124A	470	400	91	6	Flange	Opposite
N1324A	330	535	122	6	Flange	Opposite
R1324A	225	915	208	8	Flange	Opposite
RS1324A	255	1300	295	10	Flange	Opposite

\*Series 1324A includes jacketed parts as standard.

# CURVES



## PORTING

- Right Angle (90°) (Rotatable Casing), H-Q
- Opposite (180°), QS-RS
- NPT
- Flanged (ANSI)

## MOUNTING

- Foot Mount

## OPTIONS

- Jacketing (1224A Series™ and 1224AE Series™)

## SEALING

- O-Pro™ Barrier Seal

## TYPICAL APPLICATIONS

- Adhesives
- Asphalt & Bitumens
- Polymers
- Resins
- Chocolate
- Molasses
- Refined Fuels
- Edible Oils

# VIKING PUMP®

## VIKING PUMP, INC.

A Unit of IDEX Corporation  
 406 State Street  
 Cedar Falls, Iowa 50613 U.S.A.  
 Telephone: (319) 266-1741  
[vikingpump.com](http://vikingpump.com)

## Contact Your Stocking Distributor Today

Distributed By:

United States  
[vikingpump.com](http://vikingpump.com)

Cedar Falls, Iowa  
 Phone: (319) 266-1741

Canada  
[vikingpumpcanada.com](http://vikingpumpcanada.com)

Windsor, Ontario  
 Phone: (519) 256-5438

Europe & Africa  
[vikingpump.com](http://vikingpump.com)

Shannon, Ireland  
 Phone: +353 (61) 471933

Asia-Pacific  
[idexfmt-asia.com](http://idexfmt-asia.com)

China - Shanghai  
 Phone: +86-21-5241-5599  
 India - Mumbai  
 Phone: +91-22-6643-5563  
 Singapore  
 Phone: +65-6684-7305

Middle East  
[vikingpump.com](http://vikingpump.com)

Dubai, UAE  
 Phone: +971 4 2600300

Latin America  
[vikingpump.com](http://vikingpump.com)

Australia & New Zealand  
[vikingpump.com](http://vikingpump.com)

