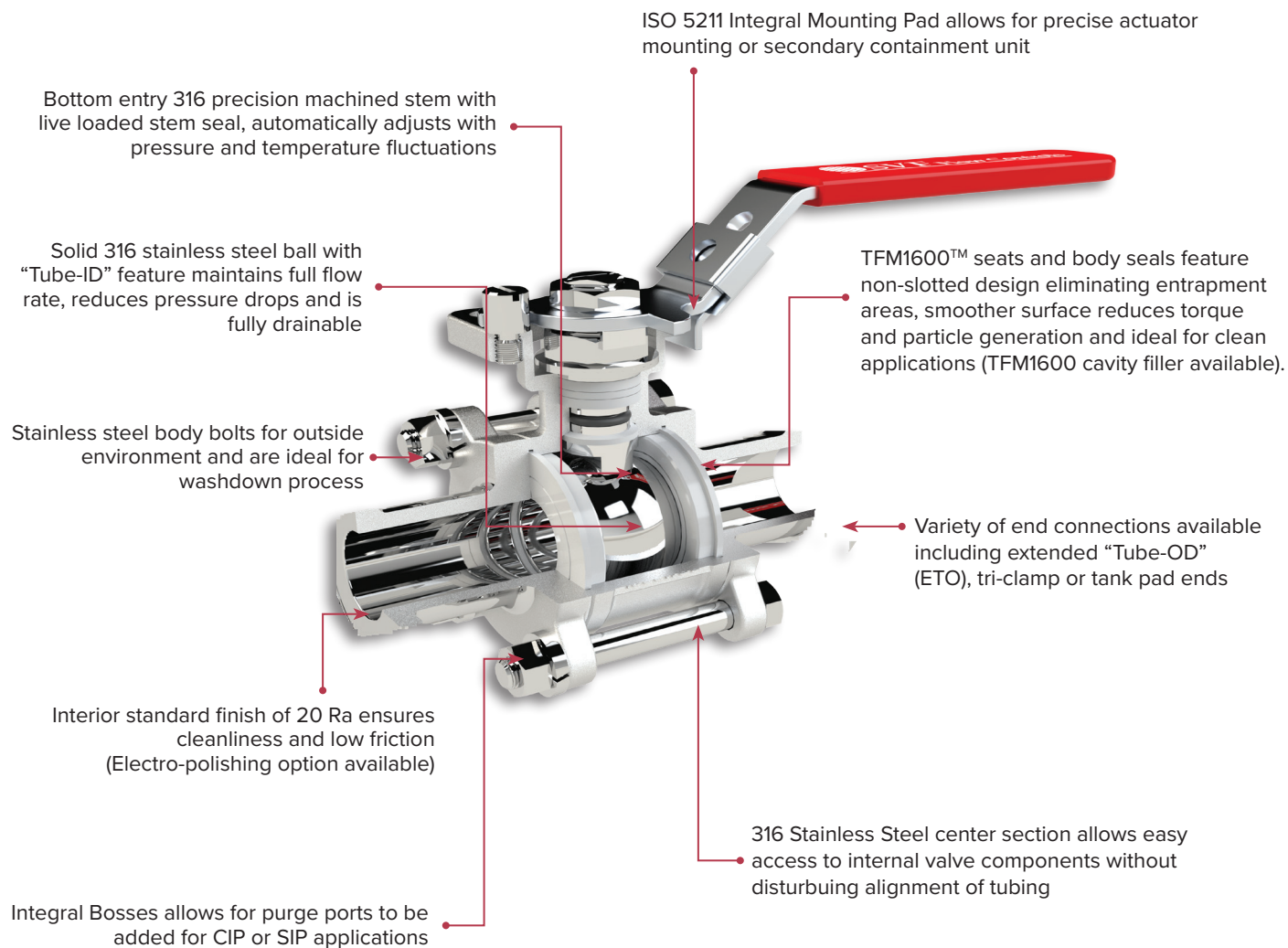
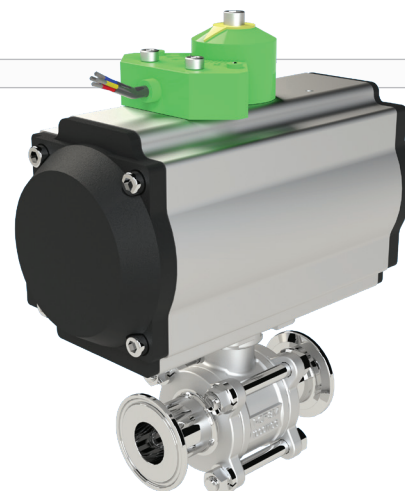


SANITARY VALVE SERIES



CleanTECH™ ball valves are engineered to be a true process piping component to specifically meet the demanding processes found in the food and beverage and other industries. The port opening of the valve's flow path is dimensionally identical to the adjacent tubing. This "Tube-ID" feature provides predictable flow rates and pressure drops and ensures thorough cleaning and full drainability.



As an ISO:9001-2015 certified company, we are committed to quality and continuous improvement in all that we do. Only the finest and highest quality materials available from certified suppliers and manufacturers are used to produce *CleanTECH™* ball valves. We recommend *CleanTECH™* ball valves to help you meet the critical demands of an ASME-BPE compliant, high purity system.

SANITARY VALVE SERIES



SERIES SB9

Hygienic Ball Valve
Cast
Sizes from 1/2" to 6"
*Available with Stainless Steel
or Hastelloy Materials*

Custom Automated
Valves Available!



Visit www.SVF.net



SERIES SB9B

Hygienic Ball Valve
Forged
Sizes from 1/2" to 4"



SERIES SMC9

Hygienic Multi-Port Ball Valve
Sizes from 1/2" to 4"
Available as T-Port or L-Port



SERIES TSB7

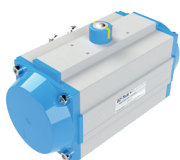
Hygienic Multi-Port Ball Valve
Cast or Forged
Sizes from 1/2" to 4"



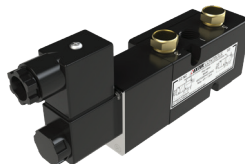
SERIES OPUS™

Hygienic Ball Valve
Cast
Sizes from 1/2" to 6"

ACTUATORS AND CONTROLS



Rack and Pinion
Pneumatic Actuator



VECTOR Series
Pilot Valves



E-Series
Electric Actuator



NEXUS-LP/LPX
Discrete Valve Controller



EXACTXL / P3
Pneumatic / Electro-
Pneumatic Positioner



Quad4
Pneumatic Actuator