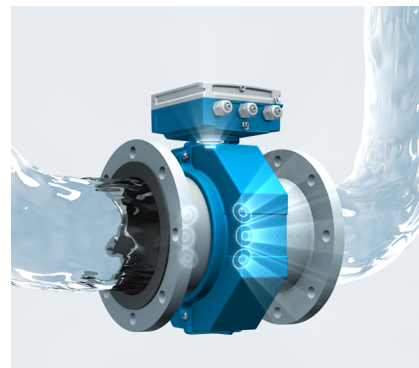


Proline Promag W 0 x DN

The world's first full-bore electromagnetic flowmeter without mounting restrictions

Benefits

- Maintain $\pm 0.5\%$ o.r. accuracy with zero inlet/outlet straight pipe runs
- Mount directly after bends, T-fittings, pipe buildup, and insertion devices
- Maximum measuring performance without sensor tube restriction results in zero pressure loss
- Built-in on-demand traceable verification without process interruption
- Submergence and direct burial options for worry-free installation



Re-think how you design new facilities or upgrade existing facilities with zero inlet/outlet straight pipe runs.

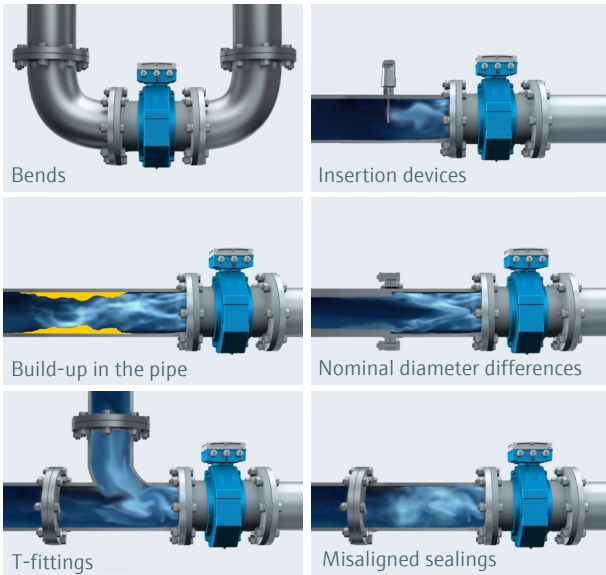
In the water/wastewater and industrial industries, flow measurement accuracy is crucial for optimal process control, monitoring, and totalization.

Problem In existing process piping many obstructions exist, such as piping elbows, T-fittings, insertion devices, and misaligned seals. These obstructions cause turbulence, leading to a disturbed flow profile resulting in poor measurement accuracy. This can lead to process control upsets, such as inaccurate chemical dosing and totalization. Conventional electromagnetic flowmeters typically require five-pipe diameters upstream

of the measurement, and two-pipe diameters downstream to achieve $\pm 0.5\%$ o.r. accuracy.

Solution The unrestricted mounting full bore option is the first and only electromagnetic flowmeter with no inlet and outlet run requirements as well as no pipe restriction, and thus no pressure loss. This option allows for a **guaranteed measurement performance of $\pm 0.5\%$ o.r. or better** in Promag W 300, 400, and 500 even when the meter is installed immediately after any obstruction detailed on page 2.

ZERO straight pipe runs with ZERO problems



Eliminates design worries

The first and only electromagnetic flowmeter combining zero inlet and outlet pipe run requirements in a full-bore design.

Unrestricted Mounting Full Bore

- Inlet/outlet run: zero/0 x DN
- Maximum measured error directly after bend: $\pm 0.5\%$ o.r.
- Nominal diameters: 1" to 120"
- For Proline transmitters: 300/400/500
- Liners: polyurethane, hard rubber, PTFE (up to 12")
- Submergence ratings: IP66/67/68 and direct burial

Performance – Third-party verified by TÜV

Unrestricted mounting full bore was tested in an external and independent National Engineering Laboratory (NEL) and achieved the expected performance of $\pm 0.5\%$ o.r.

Guaranteed measuring accuracy ($\pm 0.5\%$ o.r.) regardless of mounting location—ideal for existing and new plant installations



A highly innovative measuring concept

With multiple electrodes measuring the flow, significantly higher data density and innovative signal analysis ensure very stable measured values, even in cases of disturbed flow profiles.

Compliant traceable testing with Heartbeat Verification™

- Entire signal chain covered, from sensor to outputs
- Time-saving, simple-to-use, built-in functionality
- No process interruption
- Creates an electronic document for traceable quality reporting



For more information: us.endress.com/en/media-center/news-and-press-releases/promag-w-full-bore

USA

Endress+Hauser USA.
2350 Endress Place
Greenwood, IN 46143
Tel: 317-535-7138
888-ENDRESS
(888-363-7377)
Fax: 317-535-8498
info.us.sc@endress.com
www.us.endress.com