



# BOREAL

## RPX PROBE

### (REMOTE POINT PROBE)

- Less susceptible to low light or beam block scenarios
- Not poisoned by the gas it is meant to see
- RPX Probe compliments open path measurements

SET

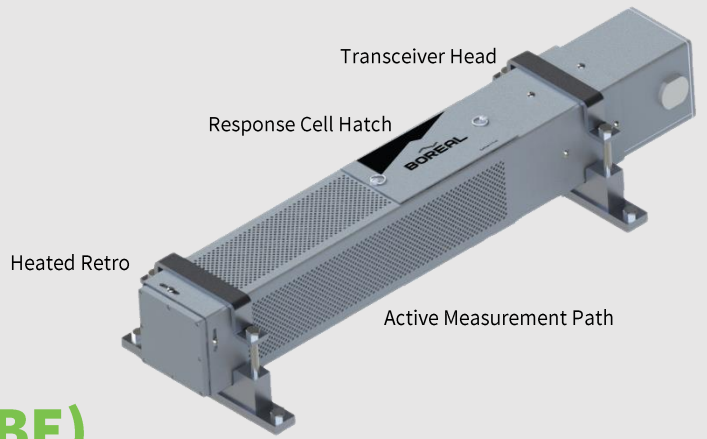
FORGET

DETECT

# BOREAL

## RPX PROBE

### (REMOTE POINT PROBE)



## WHAT IT DOES

- The RPX Probe is a measurement head for our series of GasFinder3-DC analyzers that **provides a point measurement of ppm concentration.**

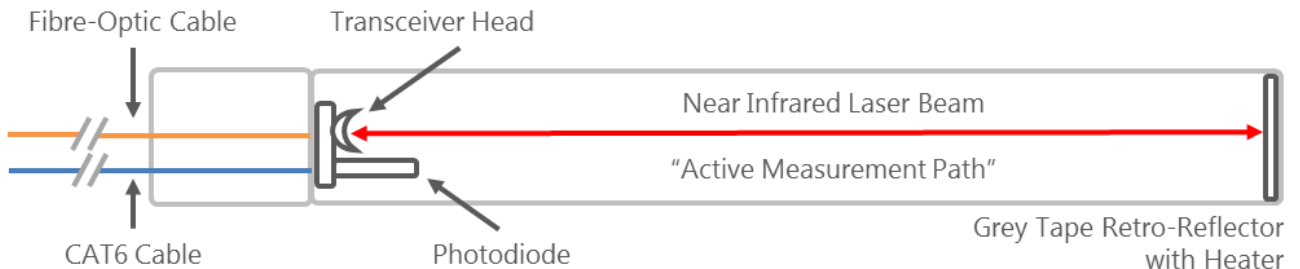
## HOW IT WORKS

- The analyzer can be **mounted locally or remotely**
- Fibre optic cable** carries the laser light from the analyzer to the remotely mounted RPX Probe's **Transceiver Head**
- The **active measurement path** is formed by the laser passing through the ambient atmosphere and being returned by the heated retroreflector
- The returning laser light is then collected on the photodiode and the signal is carried back to the analyzer via **CAT6 cable**
- The ppm concentration is then transferred **from the analyzer to the PLC or DCS**

## RESPONSE CELL

- To validate that the GasFinder3-DC is **responding appropriately to the target gas, a response cell** can be inserted into the active measurement path through the **response cell hatch**
- While the GasFinder3-DC is designed to report any instrument or measurement errors, **this response test mitigates the small remaining risk** of an instrument in an unreported error condition
- The response cell is **NOT a field calibration**
- Depending on how the response cell is held in the active measurement path **the path length can change and therefore so will the indicated reading and one cannot expect identical readings** from the response cell every time it is put into the path

## PROBE SCHEMATIC



## SPECIFICATIONS

### OPERATIONAL SPECS

- Measurement Principle:** TDLAS
- Path Length:** 0.5 m (1.64 ft) \*Custom Path Length Available
- Ambient Temperature:** -45°C - 85°C (-49°F - 185°F)
- Ambient Humidity:** operating; non-condensing 5-95% RH
- Opacity:** can withstand 95% beam block

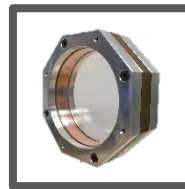
### SIGNAL CONNECTOR SPECS

- Optical Connection:** FC/APC Female (Signal-In)
- CAT6 Connection:** RJ-45 Female (Signal-Out)
- Maximum Cable Length:** 50m (retro heater)
- Power Supply:** None Needed

### PHYSICAL SPECS w/ RAIN/DUST ENCLOSURE

- Dimensions:** 753.2 x 147 x 109 mm (29.6 x 5.8 x 4.3 in)
- Weight:** 5.9 kg (13 lbs)
- Protection:** IP66/NEMA 4x
- Material:** Anodized Aluminium
- Window:** Borosilicate, fused silica, or sapphire
- Hazard Area Classification:** Class 1 Zone 1 A,B,C,D

## APPLICABLE ACCESSORIES



RESPONSE CELL



DIAGNOSTIC KIT



EDC